



Town of Northfield ***Open Space Plan*** January 2020

Acknowledgements:

Thank you to the members of the Open Space Committee for their time and efforts to improve the quality of life for Northfield residents.

- Christina Beadle/Kevin Fife, Conservation Commission
- Jon Cilley, Northfield Resident
- Eliza Conde, Winnepesauke River Trail
- Stephanie Giovannucci, Assistant Town Administrator
- Scott Haskins, Selectmen's Representative
- Mark Hayes, Highland Mountain Bike Park
- Tracey Hutton, Town Administrator
- Jared Paskavitch, Winnepesauke River Trail
- John Raffaely, Police Chief
- Glenn Smith, Town Administrator
- Jason Sterner, Spaulding Youth Center
- Brittni Stewart, Pines Community Center
- Sheryl Tedford, Winnepesauke River Trail

Table of Contents

Acknowledgements:	1
Table of Contents	2
Introduction	3
Summary	4
Surette Park	6
Pines Park	8
Granite Mills Conservation Area	11
Knowles Pond Conservation Area	12
Arch Park	14
Sand Pit/ Glines Park / Town Beach	15
Blais Park	17
Winnepesaukee River Trail	18
Shaker Road Boat Ramp	20
Richard Smart Conservation Area	21
Sotir Conservation Area	22
Open Space Priorities Table	23
Open Space 2019 Survey Results	25

Introduction

There are many designated open spaces in the Town of Northfield. Through the 2014 Master Plan process undertaken by the Planning Board, open space was identified as being a high priority. To that end, much of Northfield is zoned as Conservation (approximately 11,201 acres, or 61.2 % of the total land area).

While this zoning protects land from development, it does not address the management of existing Town owned properties. As a result, the Northfield Board of Selectmen established an Open Space Review Committee on February 13, 2018. The purpose of the Committee is to develop a plan for the management of conservation lands and other open spaces owned by the Town.

The Open Space Committee met once a month, including touring all of the properties, creating and distributing a survey to engage community partners, established a list of needs, and finally working on the creation of a plan with recommendations. The committee received input from community partners including residents, business owners, and municipal officials. The result is a plan that includes various interests to improve the quality of life in Northfield.

Through the process of building this plan, trails and trail development were identified as a primary need in open space management in Northfield. As such, trails have been mapped and included with this plan. The trails mapping was a joint effort of the Northfield Conservation Commission, the Northfield Economic Development Commission, and the community at large.

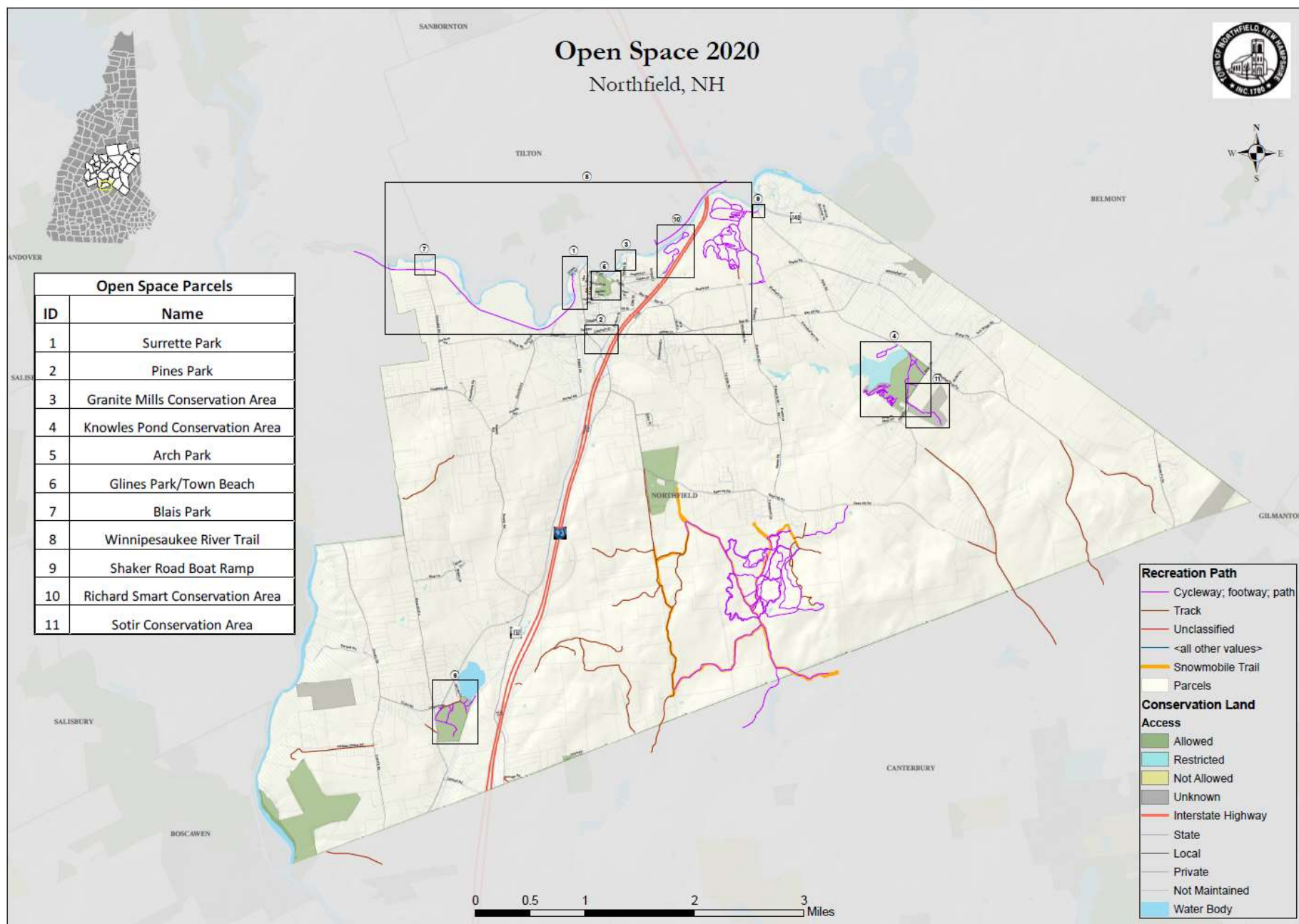
Summary

This plan outlines the open space areas within the Town of Northfield. Many of the open space areas have recommendations for trail maintenance and/or improvements. Trails were continually identified, in a survey of the community, as an important asset of the open space areas and the most desired feature to be improved.

While the Town of Northfield is ultimately responsible for the publicly held open space in the Town, it takes the efforts of community partners to maintain and improve these important assets. These efforts will require coordination on the part of Town officials to maintain the vision of the open space in Northfield and prevent the duplication of efforts.

Currently, there is no dedicated recreation staff in the Town of Northfield. Over time, there may be a need to phase-in recreation maintenance and programming staff either as a standalone department or as part of the Department of Public Works.

The Board of Selectmen, through their designated staff, must prioritize open space and as important asset to be preserved and improved to contribute to a high quality of life for residents. Open space can improve home values and contribute to a strong recreation economy.



Surette Park

Size: 7.49 acres

Status: Park

Features: Dave Tyron Skateboard Park
Winnepesaukee River Trail
Parking Area
River Access

Issues: Surette Park is a former superfund site. Access can be difficult with a single access on road that is crossed by rail road tracks. There is limited visibility from other areas to this site.

Restriction: An approximately 0.3 acre portion of the park is subject to a DES designated 'activity and use' restriction due to soil contamination concerns.

History: This is a former industrial site that was home to many industries since Northfield's founding. The last company to occupy the site was Surette American Battery, but by 1998 the site was abandoned. This was partly because in 1998 the factory building was destroyed by fire. After the fire, the EPA worked for several years to remove contaminated items and soil from the site.



The Town acquired the property by tax deed in 2000. By 2015, the cleanup and subsequent monitoring was completed and DES issued a Notice of Activity and Use Restriction relating to future use of the property.

Recommendations:

1. Municipal Bike Park
2. Dog Park
3. Softball Field
4. Updates to Skate Park – new ramps and repair pad

Justification for Recommendations:

1. The committee is recommending a phased construction of a family friendly municipal Mountain Bike Park at Surette Park. The Bike Park would consist of an array of jump lines from beginner to expert, a pump track and a skills park. It's recommended that the park be built in phases starting with a pump track. *Pump tracks* can be made of dirt or asphalt. Asphalt pump tracks can accommodate a wide range of wheeled recreational devices such as bikes, scooters, skateboards, rollerblades, etc. Dirt pump tracks are typically limited to bicycles. Both would be made for all levels of riding.
2. Dog parks promote responsible dog ownership and allow dogs to exercise and socialize safely. By proving an outlet for dog owners to socialize, dog parks create a sense of community and an atmosphere of health and safety.
3. There are 5 softball teams in the area providing sports for 90 players, ages 4 to 12. At the middle school 56 students try out for the teams with only 14 being selected. The region could support 14 teams if there were sufficient fields. There is also interest in an adult league.
4. The skate park is in need of new equipment such as ramps, this is a portion of the park that has been proven time and again to be utilized by citizens and groups from the Lakes Region area.

Plan for Success:

1. The Bike Park will need a Master Plan and that plan will consist of a Construction and Maintenance Plan, Risk management Plan, Phased development Plan, Proposal to build each phase
2. Set up a committee to oversee and develop a dog park. Considerations include; Costs, Materials, Signage, Land Requirements, and Maintenance
3. The Softball Field will need a Master Plan and that plan will consist of a:
 - Construction Plan: Leveling of the field, Outfield establishment and vegetation, Establishment of infield with 9,300 square feet of dirt, Build backstop, Construct dugouts
 - Maintenance Plan: Weekly mowing, Annual skimming of the infield, Lining and preparing for games
 - Risk management Plan
 - Phased development Plan
 - Proposal to build each phase
 - Cost Analysis
4. There are many grants out there for implementing and repairing skate parks.

Timeframe:

1. After the required approval process has been completed the physical construction of a Municipal Bike Park could take as little as 3 months to complete. The size of the park will dictate the time it will take to construct the park. The Bike Park Master Plan will include information on the size, cost and estimated time required to finish all phases of the Bike Park.
2. A dog park should take only 3-6 months to complete once funding is secured.
3. Softball Field construction will take 4 – 6 months after the funds have been raised and the plans developed.
4. After the applications are submitted for the grants, and the Town receives funding, work could begin in the following months. We would expect the first round of success to be in one year, as more grants funded, more repairs will be done.

Responsible Parties:

1. It is recommended that a 3rd party professional Bike Park Construction company be contracted to oversee yearly maintenance of the municipal Bike Park. The oversight should include training of town employees in the proper maintenance of the features within the park. The contracted company should work directly with the Town administrator on all annual maintenance associated with the Bike Park. The Master Plan will include information pertaining to annual cost to maintain the Bike Park.
2. Dog park oversight from the Town of Northfield.
3. Softball Field oversight and maintenance will be performed by a youth softball organization.



Pines Park

Size:	Pines 1	4.62 acres
	Pines 2	2.44 acres
	Pines 3	0.60 acres
Status:	The Park on Pines 1 and all of Pines 2 are leased to the Tilton/Northfield Recreation Council.	
Features:	Pines 1:	Police Station Horse Rink with bleachers and announcer's booth Baseball field with bleachers, dugouts, concession stand, and announcer's booth, Picnic tables, benches Picnic shelter Water Trough
	Pines 2:	Community Center, Basketball court, volleyball court, playground, paved parking, lighting
	Pines 3:	Undeveloped.
Restriction:	Pines 1:	None
	Pines 2:	Deed restriction in place states that if TNRC does not maintain the necessary insurance or is unable to comply with federal, state or local life safety/ health regulations then property, including buildings, reverts to the Town.
	Pines 3:	None
History:	The initial parcel was deeded to the Town in 1918. This was added to in 1921 and further adjusted with construction of 193. The Baseball field was added in 1930's and has been modified several times since that time. The Police Station constructed in the 1970's. The Horse rink was added in late 1900s. The land was subdivided in 1991; at that time the Pines 2 was leased to the Tilton/Northfield Recreation Council through 2090 and the Community Center was built.	



Recommendations:

- a. Recommended Improvements
 - i. Ice Skating Rink
 - ii. Updated Benches & Seating
 - iii. Increased Seating
 - iv. Increased Parking
 - v. New Fence Around Horse Rink
- b. Recommended Program & Activity Additions
 - i. Sprinkler Park
 - ii. New Playground
 - iii. Gazebo/Bandstand
 - iv. Community Garden

Justification for Recommendations:

- a. In a survey distributed by the Open Space Committee the addition of an ice skating rink to Pines Park is something that received a large number of votes from community members as something that they would like to see at Pines Park. It would provide community members the opportunity for outdoors recreation during the winter months.
- b. If additions are made to Pines Park allowing for more opportunities for members of the community, additional seating and parking would be necessary to accommodate a larger population of people utilizing Pines Park. Updating to seating currently in place would also serve to be a priority, as a majority of the seating currently in place is picnic tables.
- c. Replacing the fencing around the horse rink, though not a major priority is something to consider for the future, as the age of the fence and wear and tear have taken a toll.
- d. A sprinkler park, new playground, and a gazebo/bandstand were also three additions that community members mentioned and voted for as services that they would utilize with their families if they were added to the Pines Park during the summer months for children in the community. A sprinkler park and adjacent playground would be great additions for families looking for somewhere to take the kids to be active and also cool down during the summer months. The playground currently in place at Pines Park, located to the left of the Pines Community Center, is quite small, offering only a few structures that are geared towards mainly Pre-K children. Adding additional structures and potentially relocating the current structures would be a great opportunity to bring more families to Pines Park.

Plan for Success:

- a. In order to complete the proposed recommendations additional research will need to take place to determine what the next steps will be in making these additions and improvements come to fruition. Consulting with other communities, local organizations, and businesses who have knowledge of or specialize in the areas of recommended improvements will be beneficial. Also, consulting with other communities whom already offer some of these recommendations will be of great benefit as well. This will enable the Town to determine what the best course of action will be in order to get the ball rolling on adding these improvements to Pines Park in the coming years.

Timeframe:

The projected time frames for each Improvement or Program/Activity are listed below:

- a. Improvements
 - Ice Skating Rink – 1-2 years
 - Updated benches and seating – 1-2 years
 - Increased seating – 1-2 years
 - Increased parking – 3-4 years
 - New fence around the horse rink – 2-3 years
- b. Program/Activities
 - Sprinkler park – 1-2 years
 - New playground – 2-3 years
 - Gazebo/Bandstand – 2-3 years
 - Community Garden – 2-3 years

Responsible Parties:

- a. Maintenance and upkeep will be a necessary component when these recommendations and improvements are made to Pines Park. Responsible parties might include the Northfield Department of Public Works and Pines Community Center staff. Depending on what type of maintenance is needed, other resources may need to be utilized. For instance if repairs are necessary that would be outside the scope of what the Public Works Department and Pines Staff can do, other local agencies or contractors may need to be contacted in order to complete the work. A prepared maintenance/upkeep schedule would be extremely beneficial in order to ensure that these improvements to Pines Park continue to be of benefit to community members.
- b. Oversight by the Recreation Committee or Department may prove beneficial to the efficiency and effectiveness of a maintenance program.

Granite Mills Conservation Area

Size: 0.88 acres

Status: Conservation Area

Features: River Access
Shed
Parking area
Boat take-out

Issues: None

Restriction: Regulations for use have been established by ordinance and the Granite Mills Conservation Area Stewardship Management Plan.

History: The area was purchased by the Conservation Commission in 2009.



Recommendations:

1. Picnic tables / grills
2. Bathrooms / trash cans
3. Brush clearing and maintenance

Justification for Recommendations:

1. Adding picnic tables and grills will make the space more inviting to families. Hopefully attracting more people and getting them to stay longer.
2. Bathrooms and trash cans will be a good addition to the picnic tables and grills by helping the space stay cleaner and families more comfortable.
3. The safety of the river must be maintained for all users.

Plan for Success:

1. Picnic tables are easy to install but BBQ grills must be cemented into the ground.
2. Porta-potties can be supplied and cleaned by the same supplier used for the rest of the ones around town. Trash cans are emptied by the town.
3. Work with DES, New England Slalom Series (NESS), and the Town to keep the river clear of dangerous obstructions.

Timeframe:

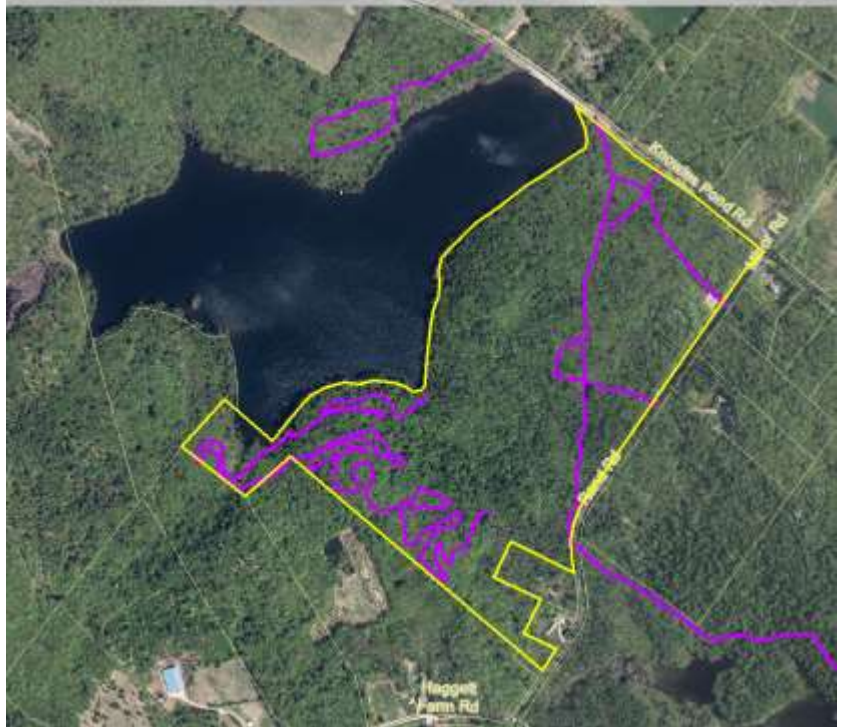
1. Picnic tables and grills can be installed in a few hours.
2. Bathrooms and trash require minimal setup time but daily/weekly maintenance.
3. This is an ongoing task.

Responsible Parties:

1. Picnic tables and grills can be installed by the town as they are not specialized and don't take much time.
2. Bathrooms can be supplied by a local supplier and trash collected by the Town.
3. Include all community users in maintenance efforts.

Knowles Pond Conservation Area

Size:	85.00 acres
Access:	Knowles Pond Road with a parking area on Rand Road
Status:	Conservation Area
Features:	Pond Swimming Kayaking Fishing Maintained trails Parking
Issues:	Unauthorized camping is a problem and can result in sanitation issues. In addition, swimmers are unwilling to use the parking lot and park in Knowles Pond Road instead. This causes traffic congestion and unsafe conditions.
Restriction:	Regulations for use have been established by ordinance and the Knowles Pond Stewardship Management Plan



History: The parcel was deeded to the town by Tilton/Northfield Aqueduct Society in 1999. It was enhanced through an easement on north side of pond in 2005.

Recommendations:

Knowles Pond Conservation area is well loved by residents and visitors alike. From the results gathered from our residents' responses on the open space survey folks enjoy the area and are looking for more recreational trails. The following recommendations will aid in meeting their needs and expectations.

1. Improved/Updated signage – This is a quick and easy fix that will assist with many issues that the residents face.
 - a. Additional Parking sign to guide visitors to the Rand Road parking area where this is ample parking.
 - b. Updated signage at current Kiosks – This would include a trail map as well as Conservation area rules.
 - c. New signage for Double Day Easement – many residents are not aware of the maintained trail on the opposite side of the pond from the kiosk.
 - d. Carry in/Carry out signage – help assist with the pollution/littering both along the trail as well as in the water.
2. Increased trail monitoring – with the assistance of the town police having conservation area rules enforced, as well as increased ticketing for illegally parked vehicles.
3. Additional garbage receptacle – with the assistance of our town's maintenance crew, adding a garbage can by the dock to assist with trash not being left behind

Justification for Recommendations:

1. The goal of these recommendations is to inform visitors of trail locations and safe vehicle parking locations.
2. Promotion of clean trails and clean water helps to preserve the resource for future use and enjoyment.
3. Monitoring will be important to ensure the safety of the visitors and the health of the conservation area.

Plan for Success:

Implementation of increased road and kiosk signage will aid in meeting the goals for Knowles Pond.

Timeframe:

Improved signage will take 2-3 months to complete. The work on the trail maps is currently underway. Safety and health monitoring is ongoing.

Responsible Parties:

These recommendations should also be reviewed with the conservation commission, town maintenance, as well as select board. None of these recommendations would take more than a few months from start to finish implementing. Road signage guiding visitors to the areas should be coordinated amongst other areas to keep the visual consistent throughout the town.

Arch Park

Size: 18.00 acres

Status: Park

Features: Memorial Arch
Picnic Tables
Charcoal grills
Parking lot

Issues: The Arch in need of repair and the lights are the subject to continued vandalism. There is concern of illegal activities in the park.

Restriction: None

History: The Park was deeded to the Town by the Tilton family in 1948. There have been various changes made to the parcel in the years since. In 1978, the Arch was added to the National Register of Historic Places. Repair work done to the Arch in 1983 and in 1984 the status of the sidewalk leading from Elm Street to the Park was clarified by deed (Book 1493, Page 1066). From 1989 through 1997, an Arch Park Committee met with the goal of the committee being to improve the Summer Street road access to the park and the Elm Street sidewalk access. They also worked on plans to electrify the lights at the Arch and added picnic facilities and playground equipment to the park.



Recommendations:

1. Signage
2. Playground
3. Bathrooms
4. Expanded picnic area

Justification for Recommendations:

1. Residents and visitors have a difficult time locating the entrance to the Park; a sign would facilitate traffic.
2. Union Sanborn School may close leaving a need for a playground.
3. Bathrooms are available only in the summer. They are placed by Memorial Day and removed by Columbus Day.
4. Picnic tables and grill stations would promote increased usage of the park.

Plan for Success:

Most of the recommendations are easy to enact on in just one year. The Town currently installs portable bathrooms for the warm weather season. The Town has the option to utilize local sign vendors. Fundraisers, grants, local businesses plus Town funding could play the roll in replacing and expanding the picnic area to include updated grills and picnic tables.

Timeframe:

1. Signage should take 2-3 months to implement
2. Long range planning with the School District
3. Ongoing Porta-Potty contract
4. Picnic area could be installed quickly by the Town of Northfield once funding is secured.

Responsible Parties:

Town Officials

Sand Pit/ Glines Park / Town Beach

Size:	69.04 acres
Status:	Park
Features:	Playground Beach Bathhouse/changing room Parking lot
Issues:	Swimming area contaminated Bathhouse closed Majority of property not used Trash dumping
Restriction:	If not used for park purposes for 15 years then ownership reverts to the estate of Leroy Glines (deed restriction, Book 538, Page 229)
History:	Beach portion given to the town in 1935 by the Glines Family



The following is an excerpt from a 1999 memo concerning the beach:

In 1935, the town received a donated 65 acre parcel from the Glines family to create a park at Sandogardy Pond (formerly known as Northfield Pond). As many Town residents will attest, for the next 30 years it was quite the gathering place. There were many beach goers and picnickers from Northfield and Tilton, who spent many hours of their summer weekends at the beach. Unfortunately, during the 1970's the facility began to fall into disrepair from the elements and vandalism, subsequently the use of the beach declined. Part of the reason is that over the past few decades, infiltration of sand and sediment into the pond, and specifically the beach area has caused the water depths at the shore to decrease. As a result, the growth of shallow water plants such as lily pads and marsh grass has started to infiltrate the east end of the pond near the river outlet. This vegetation is slowly migrating toward the west and soon the entire beach will be un-swimmable. The Town's resident would then lose a valuable and precious natural resource.

In July of 1999 the Selectmen hired an engineer to prepare a Master Plan for improvements to the Sandogardy Pond Town Beach. Following a public meeting on September 28, 1999, a preliminary design and grading plan for the layout and development of the Sandogardy Beach property was prepared. The plan incorporated the input received from the Board of Selectmen, Town staff, the Tilton Northfield Recreation Council staff, abutters to the pond, and members of the Northfield Conservation Commission.

From the input gathered at this meeting, it became apparent that residents wanted to see the Sandogardy Pond Town Beach restored. The plan for development includes amenities such as beach dredging for deeper water for swimming, dredging for a small boat launch area, a small dock, a grass picnic area with play area and playground equipment, a bath house with toilet facilities, storage for beach and play equipment, a volleyball area, a parking area, site lighting and hiking trails. In addition, we have include such items as picnic tables, screen and shade trees and walking paths.

Beach improvement project adding bathhouse, parking improvements and possibly dredging occurred in 2004. Playground added shortly thereafter.

Recommendations:

1. Trail Improvements
2. Beach Clean-up
3. Water Quality Improvements
4. Archery/Gun Range at the Sand Pit

Justification for Recommendations:

1. Trail connectivity with increase use and awareness.
2. Beach clean-up would assist in deterring the growth of weeds growing on the beach.

Plan for Success:

1. Assess existing trail conditions and mark trails with appropriate uses.
2. A NH Department of Environmental Services approval to rake the beach would need to be obtained, as well as the equipment to perform the task.
3. Water quality improvements to be completed as NH DES grant funding becomes available.
4. Long range examination necessary for placement in the gravel pit.

Timeframe:

Ongoing trail maintenance/improvement and beach clean-up is required. Public education on water quality improvements will include efforts for wastewater and stormwater management,
A potential shooting range will require a detailed plan for development and research of options to develop such a range safely.

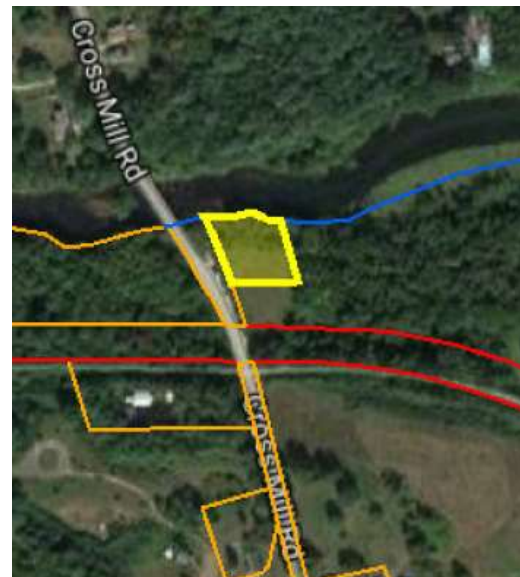
Responsible Parties:

Town Officials
Archery/Gun club



Blais Park

Size:	0.70 acres
Access:	From Cross Mill Road
Status:	Park
Features:	River Access Parking lot
Issues:	Potential future congestion issue if Franklin proceeds with Mill City Park
Restriction:	None
History:	Blais Park was deeded to the Town by Gloria Blais in 2016.



Recommendations:

1. Parking area at the road
2. Clean up old markers

Justification for Recommendations:

1. Clean up and define parking to make the area more inviting for the public.

Plan for Success:

1. Create more signage.
2. Organize a clean-up day.

Timeframe:

Spring 2020

Responsible Parties:

Conservation Commission
Town of Northfield

Winnepesaukee River Trail

Size:	Approximately 2.5 miles of pedestrian/bike trails
Access:	Surette Park Johnson Road Cross Mill Road
Status:	There is a series of easements that have been obtained and are controlled and managed by the Winnepesaukee River Trail Association.
Features:	2.5 miles of trail in Northfield, continuing on to Franklin beyond Informational kiosks
Issues:	Trash dumping
Restriction:	None
History:	Construction of the trail started in early 2000's, Northfield portion was completed in 2017. There are possible future plans to build a bridge connecting the Tilton portion of the trail with Granite Mills Park.



Recommendations:

The survey indicated that security on the Winni River Trail is of high importance to the community. The Winni River Board is aware that some people feel uncomfortable on the trail, but many of the occurrences have happened after dark, (and on Franklin side) when the trail is not open to the public. The Open Spaces committee met with Chief John Raffaelly and he reported that the trail is monitored by the police on bicycles in the warm months and feels it is a safe place. It is more perceived than actual problems.

Justification for Recommendations:

At this time, there is no recommendation for a security plan for the trail.

Plan for Success:

1. Town of Northfield will support trail via maintenance (mowing), marketing, and security (Police checks).
2. Plan and execute Annual Cleanup events.

Timeframe:

On-going

Responsible Parties:

Winnepesaukee River Trail Board
Town of Northfield

Other Open Space Areas

Recommendations:

1. Trail Mapping
2. Update Sidewalks
3. Evening Security Lighting
4. Explore locations for a new football field for Winnisquam Regional Schools.

Justification for Recommendations:

1. The best way to promote the use of open spaces is through advertisement. To that end, mapping and marketing the trails in Northfield and potential connectivity within and outside of Northfield is seen as the first priority.
2. Sidewalks around town are a very visible piece of transportation infrastructure. They provide a transportation purpose as well as can be a reflection of the quality of services and pride in a community. To promote recreational tourism the community should project an aesthetic reflective on the care residents have for their community.
3. Often times, vulnerable populations are uncomfortable with using some open spaces due to safety concerns. To promote the use of open spaces and assist the Police Department in ensuring safety, dusk/dawn motion lights can be installed to illuminate some of the most used the trails.

Plan for Success:

1. The trail system need to be fully located with GPS and mapped using ESRI software. Once this is accomplished, attributes such as trail condition and appropriate transportation modes can be added. With assistance from the Lakes Region Planning Commission, this mapping can be achieved and marketing materials produced for the public.
2. Sidewalk maintenance and repair should be an annual priority for appropriation. It is understood that road surfaces take precedent, but some funds should be set aside annually for sidewalks as well. When road construction is undertaken the sidewalks should be evaluated for maintenance at the same time.
3. To promote the use of open spaces and assist the Police Department in ensuring safety, dusk/dawn motion lights can be installed to illuminate some of the most used the trails.

Timeframe:

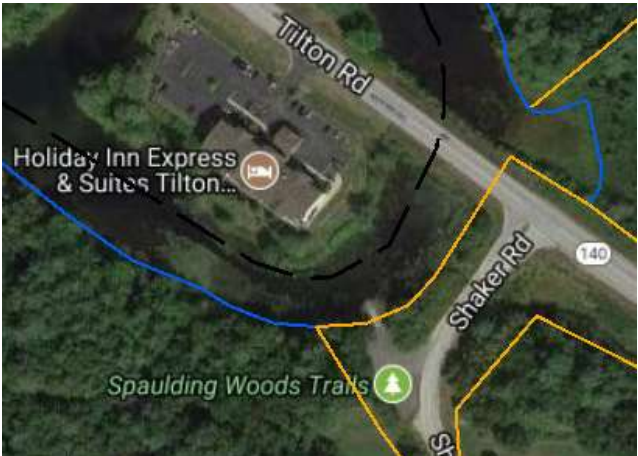
1. Immediate
2. Annual
3. Long range

Responsible Parties:

Town Administrator with support from the Conservation Commission and other trail users.

Shaker Road Boat Ramp

- Size:** 0.26 acres
- Access:** Shaker Road, west of Rt. 140 intersection.
- Status:** State owned, maintenance in question
- Features:** Paved parking area and boat ramp formation
- Issues:** Parking by those using Spaulding bike trail system conflicts with boat trailer parking.
- Restriction:** None
- History:** In 2000 the town requested that NH Fish & Game construct a public access boat launch at this location. At that time it was agreed that Fish & Game would build the ramp on DOT land and that the town would be responsible for “maintaining cleanliness of the site and policint activities.”



Recommendations:

None

Justification for Recommendations:

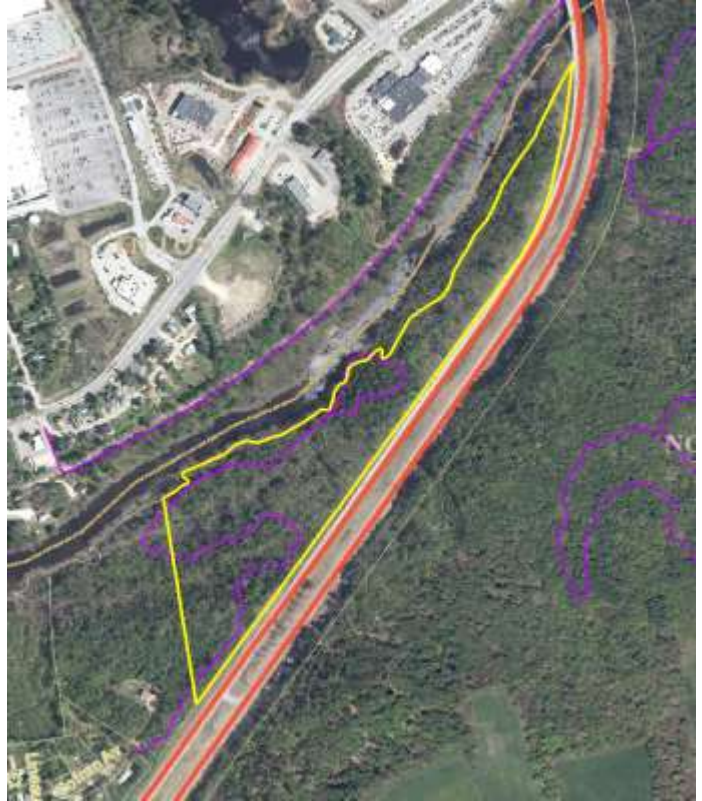
Timeframe:

Responsible Parties:



Richard Smart Conservation Area

Size:	30.00 acres
Access:	From trail off of Cofran Avenue Extension
Status:	Conservation Area
Features:	River Access Maintained trails Devil's Den rock formation
Issues:	Sometimes used as campsite by homeless individuals
Restriction:	As established by ordinance and stewardship/management plan. Deed restriction that the property be used for "public recreation and conservation purposes"
History:	Deeded to the town by Spaulding Youth Center in 2005.



Recommendations:

1. Signage at Granite Street
2. Trail Maps

Justification for Recommendations:

1. Recreation sign directing traffic to the trails.

Timeframe:

1. Road signage could be accomplished in 2-3 months.
2. Trail mapping is ongoing.

Responsible Parties:

1. Trail maintenance is the responsibility of the Conservation Commission.
2. Road signs to be installed by the Town of Northfield.

Sotir Conservation Area

Size:	37.57 acres
Access:	Off of Rand Road
Status:	Conservation Area
Features:	Trails
Issues:	Lack of Parking Wheeled vehicles on trails
Restriction:	None
History:	Deeded to the town by Gregory and Catherine Sotir in 2012



Recommendations:

1. Cement blocks and chain or gate
2. Increased signage

Justification for Recommendations:

1. Preservation of trail equality and pedestrian/user safety
2. Inform residents and visitors of trails

Timeframe:

1. Fence/Gate to be installed and monitored for effectiveness 2019/2020
2. Maps and signage ongoing

Responsible Parties:

1. Trail maintenance is the responsibility of the Conservation Commission.
2. Gate/Road signs to be installed by the Town of Northfield.

Open Space Priorities Table

(Information is based on a collaboration of data collected by the committee, survey results and working with local organizations)

	<u>Property</u>	<u>Programs/Activities</u>	<u>Improvements</u>	<u>Priority</u>	<u>Time Frame</u>	<u>Funding</u>	<u>Responsible Party</u>	
							<u>Installation</u>	<u>Maintenance</u>
1	Surette Park		Security	2	1 Year	Town	Town	Town
			Picnic Tables and Water Station	3	1 Year	Grants, Donations	Town	Local Organization
			Improve/Replace Skate Park	1	1 Year	Grants, Donations	Local Organization	Local Organization
			Bathrooms	3	1 Year	Town	Vendor	Vendor
		Boat Take-out Point		1	Existing			
		Mt. Bike Pump Park		4	Phase 1 & 2	Grants, Donations, Fundraisers	Local Group	Local Group
		Dog Park		5	1 & 2 Years	Grants, Donations	Local Organization	Local Group/Town
		Playground		6	6 Years	Donations	Vendor	Local Group/Town
		Girls Softball Field		6	2-3 Years	Local Organization, Donations	Local Organization	Local Organization
2	Pines Park		Ice Skating Rink-within horse rink	1	1 year	Donations	Town	Town
			Update benches and seating	2	1 Year	Donations	Town	Local Group/Town
			Increase seating	3	1 Year	Donations	Town	Local Group
			Increase parking	8	1 Year	Donations	Town	Town
			New Fence around Horse Rink	4	1 Year	Donations	Local Organization	Local Organization
		Sprinkler Park		9	10 Years	Grants	Vendor	Town
		New Playground		5	5 Years	Grants	Vendor	Local Group/Town
		Gazebo/Bandstand		6	3 Year	Donations	Local Organization	Local Group/Town
		Community Garden		7	1 Year		Local Group	Local Group
3	Granite Mills Conservation Area		Boat Take-out Point	1	1 Year	Donations	Local Organization/Town	Local Organization
			Picnic Tables and Grill Stations	2	1 Year	Donations	Town	Local Organization
			Trash Cans	3	1 Year	Town	Town	Town
			Bathrooms	3	1 Year	Town	Vendor	Vendor
4	Knowles Pond Conservation Area		Trail Improvement and Clean-up	1	1 Year	Grants	Town, Local Groups	Local Organization
			Update Kiosk/Signage	2	1 Year	Conservation Funding	Town, Local Groups	Local Organization
			Picnic Tables	4	3 Year	Donations	Town	Local Group/Organization
		Boat Take-out Point		3	Existing			
5	Arch Park		Better signage at entrance	1	1 Year	Town	Vendor	
		Playground		2	5 Years	Grants	Vendor	Local Group/Town
		Bathrooms		3		Town	Vendor	Vendor
6	Glines Park/Town Beach		Beach area clean-up	2	1 Year	Town/Local Group	Town	Town
		Trail Improvements		1	1 Year	Grants	Existing	Local Group
7	Blais Park	Parking Area at Road		1	1 Year	None	None	Local Organization

	<u>Property</u>	<u>Programs/Activities</u>	<u>Improvements</u>	<u>Priority</u>	<u>Time Frame</u>	<u>Funding</u>	<u>Responsible Party</u>	
							<u>Installation</u>	<u>Maintenance</u>
8	Winnepesaukee River Trail		Security	1	2 Years	Grants	Local Organization/Town	Local Organization/Town
9	Other		Map all trails	1	1 Year	Town	Town	Town/Local Organizations
		Update Sidewalks		2	5 Years	Grants, Town	Town	Town
		Evening lighting		3	5 Years	Town, Energy Savings Programs	Town	Town
10	Boat Launch	Nothing New Needed						
11	Richard Smart Conservation Area		Trail clean-up	1	Ongoing	Conservation Funding	Volunteers, Town	
12	Sotir Conservation Area		Trail clean-up	1	Ongoing	Conservation Funding	Volunteers, Town	
			Signage	1	Ongoing	Conservation Funding	Vendor	

* Local Organization: an established organization that can receive or has existing funding to assist in projects (for example: Winnepesaukee River Trail Assoc, WYSL, TNLL, Whinnies 4-H, etc...)

* Local Group: a group of volunteers (for example: Beautification Group, Recreation Group, Garden Clubs, etc.)

* Town: work done by employees, boards, committees, or commissions

Open Space 2019 Survey Results

Total number of participants 134

1. From the following list, please check ALL the Northfield open spaces that you visited within the past 12 months (a map of Northfield's open spaces can be found at the end of this survey):

92 Arch Park	35 Surette Park
12 Blais Park	5 Granite Mills Conservation Area
58 Island Park	59 Knowles Pond Conservation Area
75 Pines Park	8 Richard Smart Conservation Area
36 Ballfield	7 Sotir Conservation Area
27 Horse Ring	35 Shaker Road Boat Launch
40 Glines Park/Town Beach	93 Winnepesaukee River Trail

2. Overall, how would you rate the condition of the open spaces you visited?

25 Excellent	24 Fair
84 Good	1 Poor

3. How would you rate the condition of Northfield's parks and conservation areas you visited individually?

1 – Excellent 2 – Good 3 – Fair 4 – Poor

Arch Park.....1 = 30, 2 = 38, 3 = 14, 4 = 4	Surette 1 = 7, 2 = 15, 3 = 7, 4 = 3
Blais 1 = 3, 2 = 4, 3 = 4, 4 = 0	Granite Mills..... 1 = 2, 2 = 2, 3 = 4, 4 = 0
Island Park.....1 = 17, 2 = 27, 3 = 9, 4 = 1	Knowles CA 1 = 14, 2 = 21, 3 = 18, 4 = 5
Pines Park1 = 15, 2 = 35, 3 = 15, 4 = 3	Smart CA 1 = 1, 2 = 2, 3 = 5, 4 = 1
Ballfield1 = 17, 2 = 9, 3 = 5, 4 = 2	Sotir CA 1 = 3, 2 = 3, 3 = 3, 4 = 1
Horse Ring.....1 = 5, 2 = 13, 3 = 8, 4 = 2	Shaker Rd BL 1 = 11, 2 = 18, 3 = 4, 4 = 3
Glines/TB.....1 = 8, 2 = 11, 3 = 15, 4 = 5	WRT 1 = 21, 2 = 35, 3 = 22, 4 = 2

4. When choosing to visit one of Northfield's open spaces, what is most important to you? Please choose three of the following:

49 Convenience	44 Facilities (picnic tables, bathrooms, etc.)
57 Availability of parking	38 Activities for children (playground, etc.)
51 Security	92 Cleanliness
85 Natural surroundings	

5. From the following list, please check ALL the reasons that prevent you from using Northfield's parks and conservation areas more often.

59 1. I don't know the location of open spaces	28 6. Lack of parking
45 2. Not enough time	29 7. Cleanliness
12 3. Not interested in types of recreation spaces provided	15 8. Open spaces are not well maintained
8 4. Health problems	6 9. Not accessible for people with disabilities
29 5. Lack of facilities	31 10. Security is insufficient

6. From the list in Question 5, what are the three major reasons preventing you and your family from using Northfield's parks and conservation areas. (Write the top three choices below using the numbers from the list in Question 5 above)

1. 1 st = 38, 2 nd = 18, 3 rd = 8	6. 1 st = 5, 2 nd = 8, 3 rd = 14
2. 1 st = 27, 2 nd = 11, 3 rd = 7	7. 1 st = 8, 2 nd = 12, 3 rd = 5
3. 1 st = 6, 2 nd = 4, 3 rd = 6	8. 1 st = 6, 2 nd = 5, 3 rd = 3
4. 1 st = 4, 2 nd = 3, 3 rd = 1	9. 1 st = 0, 2 nd = 0, 3 rd = 3
5. 1 st = 8, 2 nd = 3, 3 rd = 5	10. 1 st = 9, 2 nd = 14, 3 rd = 9

7. From the list below, please check all the services that you and your family would use if offered by the Town of Northfield:

- | | |
|---------------------------------------------|----------------------------------------------------------|
| 52..... 1. Dog Park | 26..... 7. Municipal mountain bike park |
| 18..... 2. Girls' softball field | 68..... 8. Additional river access for kayaking, boating |
| 5..... 3. Another Little League field | 26..... 9. Tennis court |
| 92..... 4. Additional hiking/walking trails | 13..... 10. Horse trails |
| 53..... 5. Additional playgrounds | 60..... 11. Ice skating rink |
| 47..... 6. Overnight camping | 59..... 12. Gazebo/stage for outdoor music events |

13. Other:

sprinkler park for kids in summer
Town kayaks/canoes to borrow - children's kayaks,
Disc golf course
View of Tilton Arch from town of Tilton
Knowles pond needs more open space for family picnics. would be nice to have a beach for swimming
Traditional use only trails - no wheeled or motorized vehicles
open/safe walk area for seniors
shooting/archery range
5-Need more unique items - speaks to our children that they are valued.
More benches seating in Pines area
Gardens
Docks at waterfront parks, better sidewalks!
pump track
GET RID OF THE PINE TREES AND PLANT GRASS
Playground and bathrooms at Arch Park please, please, please!
planned activities/events (kite flying at arches, food festival, disc golf, etc)
Basketball Court
Picnic Areas
Indoor area for Tennis practice when cold or raining.
Scout events (both Girl & Cub/Boy Scouts)
maintaining roads
Pump track
Town pool
Safe walking trails no homeless camps or punks
ATV access and trails
Summer concert series (bands, comedians,dj,karaoke, talent show)
Four wheeling trails
We could really use another playground, especially if Union Sanborn closes. Arch Park would be awesome with more facilities like a playground and a real bathroom.
Clean swimming area

8. From the list in Question 7 please let us know the three services that you and your family would like to see offered in Northfield's parks and conservation areas: (Write the top three choices below using the numbers from the list in Question 7 above)

1. 1 st = 19	2 nd = 8	3 rd = 6	8. 1 st = 13	2 nd = 19	3 rd = 9
2. 1 st = 7	2 nd = 4	3 rd = 3	9. 1 st = 0	2 nd = 5	3 rd = 2
3. 1 st = 0	2 nd = 1	3 rd = 0	10. 1 st = 2	2 nd = 2	3 rd = 1
4. 1 st = 29	2 nd = 24	3 rd = 9	11. 1 st = 4	2 nd = 7	3 rd = 23
5. 1 st = 15	2 nd = 10	3 rd = 10	12. 1 st = 7	2 nd = 12	3 rd = 14
6. 1 st = 6	2 nd = 11	3 rd = 8	13. 1 st = 6	2 nd = 6	3 rd = 3
7. 1 st = 5	2 nd = 2	3 rd = 3			

9. The School District tells us that Union Sanborn School may close within the next few years. If that happens the community playground at the school may be lost. If the town were to build a playground to take its place what would be your preferred location?

72..... Next to the Pines Community Center 29.....Arch Park 22.....Surette Park

10. In your opinion, Northfield's parks and conservation areas should do which of the following, check all that apply:

109..... Provide outdoor recreation opportunities for Northfield residents
 74..... Help bring visitors to Northfield, possibly helping local businesses
 92..... Preserve natural areas

Any other comments you would like to share with us?

Thanks for writing up this survey Glenn!!! Jared
Anything that can encourage people and families to enjoy the outside is a gift.
Hopefully union sanborn doesn't close, then the playground won't move.
Remove portion of "Pines" in favor of a large covered pavilion.maybe it could double as an outdoor skating rink in the winter.
I live alone and only use the parks for walking with my dog. I think they are well maintained and beautiful. The trails behind the dump worry me a bit because of the homeless campers. It has become a safety issue so I no longer use those trails. I visit Arch Park just about every day and I give kudos to whoever maintains that area. It is ALWAYS beautiful and clean.
The areas I've visited in Northfield so far are great, however recently I've come across people on the trails who don't make me feel safe which is why I'd list security and cleanliness as my top concerns. I realize there's not much security you can provide on the trails so this may be more directed at the town / police and their efforts to routinely visit these places and make sure no sketchy activity is happening. Thanks for the questionnaire!
You forgot Buffalo park. I have explored the trails there a few times this summer and fall. Needs some work but has great potential.
Options for young adults that aren't centered on little kids.
I grew up in Sanbornton and bought a house in Northfield. I am not considering staying here for more than 5 years due to lack of places to take my dog hiking. I wish there were more places, and that they were cleaner. There is trash always at Knowles pond from young kids going there to drink and party. The rocks there are vandalized.
The summer view of the Tilton Arch from Route 3 (town of Tilton) can be improved. Cut or prune every other tree, no clear cutting. The view is nice during the winter's short gray cold days. The wrong season for tourists.
Knowles Pond is beautiful however the trails don't dry out enough in summer. It would be nice to see the walking trails opened up for more sunlight to come in.
Arch Park needs a better, larger, clearer sign on Summer St.

close above areas during winter, no plowing. security camera on winni trail, esp. franklin side.close surrette area-put skate board park near ballfield,use park street area for playground, skating,dog park area,install fence for child safety from street around entire area, remove some trees for more visibility forpolice cameras, expand pines park lot to accommodate above, centralize child activities for safety,visibility, use sanborn area to expand library parking - or move library into school area for more room/disability access and turn old library into town hall.
Why isn't there better parking on Crossmill Road for trail users? The cross walk is continuously blocked making it extremely difficult to see pedestrians. This needs to be addressed. It's a serious safety issue and negligent to not address it.
Park & Tables at Pines
Open space area at a park more green grass area.
Hoping that the town of Northfield will come up with a plan to utilize the land if Union Sanborn closes.
limit it to residents only.
DOG PARK DOG PARK DOG PARK DOG PARK
The Knowles pond conservation area should be for residents onky!!! The mountain bike park sends all there customers there including out of staters who take baths there after. are very loud and leave trash and take up parking with no care or concern for others who may want to park or use the boat launch. They also have the pond on there websire as a free place to use. Unacceptable to me as tax payer!
stop letting people that use the Highlands bike park use Knowles pond as a bath tub....Get it
stop letting people that use the Highlands bike park use Knowles pond as a bath tub....Get it
I would like to see maintained winter walking trails.
Would like to see nicer sidewalks connecting all of Northfield's downtown parks, arch park, pines, skate park, etc. better parking for little league would be neat.
how do we access the new greenhouse at Southwick and the new Mountain Bike trails they have just built with the AG Center.
WE HAVE GREAT LEADERSHIP IN NORTHFIELD
A community garden would be great! Maybe it could be a project for the WRHS Ag center students?
a shelter at arch park would be nice.
Need to have benches/seats along the Northfield side of the Cross Mill Trail.
I'd like to see kids get more active outside, especially teenagers.Being one myself, I find it good to get other kids my age to play basketball with.
Arch Park - Concerned about drug residue on the ground.
I didn't know where some of these places are but I'll look them up now that I know where to look. I was really bummed that Arch and Surrette where not plowed this winter. I missed the 2 meeting minutes that it was mentioned in otherwise I would have shown up to represent us that visit the parks every day.
There should be more stuff for skaters scooter riders and bike riders
Safety, bathrooms, evening lighting are important
Don't let them close union Sanborn
I want to see more places and things for us dog parents. I dont habe a safe fun place to take my dog to play around here. Kids have plenty of parks and places to play, how about us who don't have human kids!!
The possibility of union Sanborn school closings is an awful idea. Northfield should also offer full day kindergarten for all students not just some.
I don't know where Surette Park is but Arch Park is in a great, central location and would really benefit from more facilities.
I believe there should be better advertising of the parks and such in Northfield. And the Highland Ski Area anniversary this year was wonderful. I would really like to see that become a yearly event. Maybe bring in vendors that go to the Old Home Day events.I would love to have more things that I can do with my Grandson who also lives in Northfield.

OPTIONAL – DEMOGRAPHICS

The following questions are optional and included to better analyze the information provided.

11. Age of person who filled out the survey:

Age	Age	Age	Age	Age	Age	Age	Age
6 1	20 3	30 3	40 4	50 6	60 4	70 3	80 1
13 1	22 1	31 2	41 2	52 2	62 3	72 1	
15 2	24 1	32 2	42 1	53 2	63 2	74 2	
16 1	26 1	33 3	43 2	54 1	64 2		
17 2	29 1	34 4	44 3	55 2	66 4		
		35 7	45 4	56 3	67 1		
		36 3	46 1	57 4			
		37 3	47 1	58 1			
		38 7	48 3	59 2			
		39 3	49 1				

12. Counting yourself, how many people in your household are:

Under age 5.....	37	Ages 20 – 34	52
Ages 5 – 14	66	Ages 35 – 49	136
Ages 15 – 19	29	Ages 50 – 64	61
		Over Age 65	33

13. Are you a Northfield resident? 116.....Yes 12..... No